

**SINGAPORE ORCHID**

Your set comprises 6 items:-



Column, Trumpet, Trumpet Stand, Side & Tri Petals , Assembly Stand

1. Please read introduction paras 1 - 29.
2. Prepare paste as paras 9-12. You may wish to colour paste to the basic base colour required (see para 26).

3. Make petals in the following order and assemble as indicated.  
 a) Column petal, 1 per orchid. Powder mould with corn flour dusting bag. Fill mould with small roll of paste and while holding the mould firmly in your left hand, use the second finger pad of your right hand to 'smear fill' the mould as per diagram. Smear from round end to pointed end. You will need paste of a fairly soft and fresh consistency for this as otherwise it may break. Get a cocktail stick and lay it along column petal, stick it in to the paste slightly at wide end and remove on cocktail stick. You may need to practice this a few times. Leave on one side to dry, about half an hour is enough.

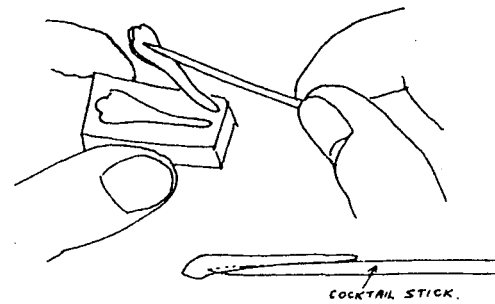
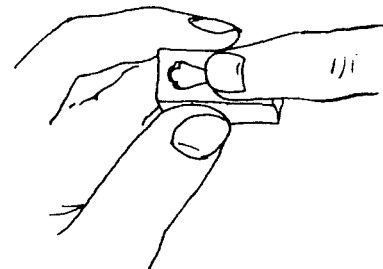
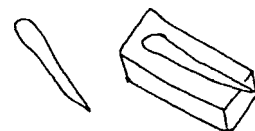
b) Trumpet petal, 1 per flower. Roll out paste on board, lifting between each roll (para 11); cut and vein as paras 13, 14. Remove as para 15 and place on a well powdered board and frill edge as per diagram (see para 20). Then lay petal on trumpet stand and form to shape with a ball tool, do not press on frilled areas, be fairly gentle and allow paste 'time' to move.

c) Smear slight amounts of egg white on insides of rear edges of trumpet petal and place dry column petal in position, ease petal sides in with a dry cocktail stick to adhere to column petal (see diagrams).

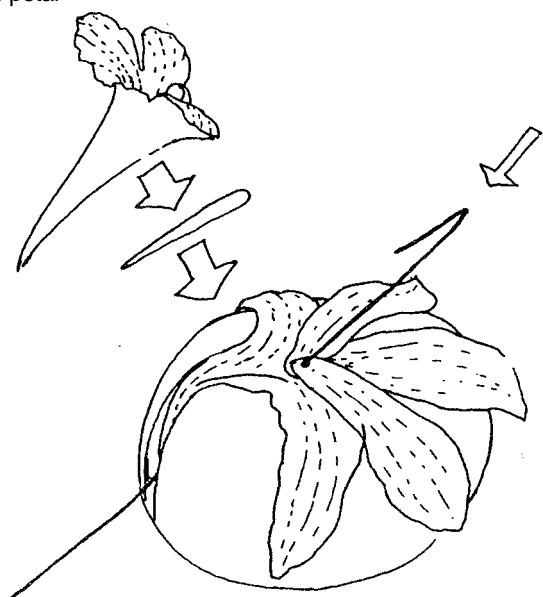
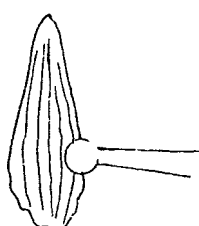
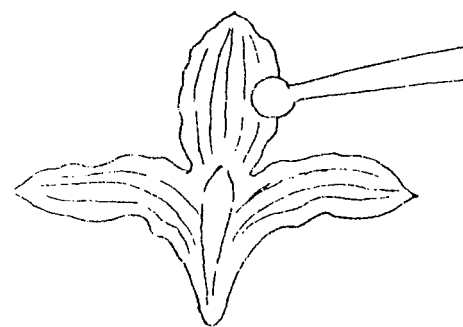
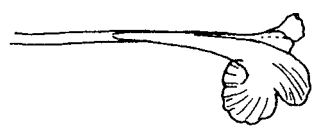
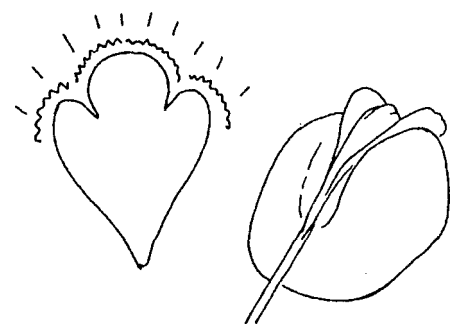
d) Remove assembly with cocktail stick. Remove cocktail stick and 'point' rear of petal with fingers. Place on suitable surface to dry for 24 hours.

4. a) Tri-Petal, 1 set of three per orchid; these are really the calyx of sepals but for simplicity we have called them the tri-petal. Cut and vein as above, remove and place on palm of hand; it is often better to have dusted palm lightly with the corn flour dusting bag and roll frill edges as indicated in diagram. Place on large assembly stand and, with cocktail stick, shape rear end of petal in groove and arrange other petals as per diagram.

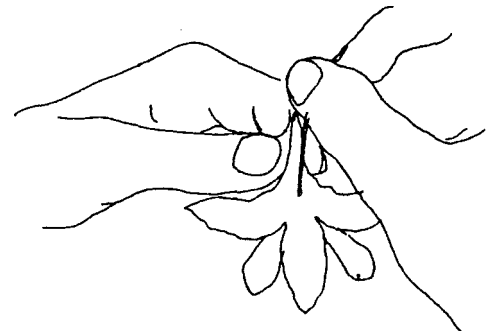
b) Side Petals, 2 per orchid, Cut and vein as per above, roll frill sides very lightly; just enough to thin edge of petal. Place in positions shown in diagram, sticking down to tri-petal with tiny amounts of egg white (use as little as possible). Blend into tri-petal with gentle application of ball tool. You can vary the apparent size of the flower by removing part of the side petals from the bottom end before assembly. With a 4 inch length of 26 gauge wire make a tick end of about 1/4 inch and insert at point where the two end pads of the side petals are stuck down. Thread this wire through so that the long end travels beneath the sugarpaste and emerges at the rear point of the tri-petal, the tick end should now be resting on the paste. 'Bed down' the tick end carefully so that it just rests on the surface of the tri-petal pointing to the rear.



COCKTAIL STICK.



5. Final assembly. Roll small piece of paste as diagram and stick with very small amount of egg white to tri-petal, tamp it down with ball tool to cover wire and make 'bed' for trumpet petal. Apply egg white or stick paste (para 25) to the 'bed'. Place dry trumpet petal upside down in correct position on 'bed'; the front end of the column petal should be on top of the hole for the wire, which although it is now covered can be remembered. Draw up sides of tri-petal around pointed end of trumpet petal with a cocktail stick and model into the pointed end of the tri-petal. Remove, if necessary, to model gently with fingers and then return to assembly stand until it is reasonably well set (the time for this can vary greatly due to the paste used). You can then transfer to a suitable holder to complete drying.



Do not attempt to adjust wire stem until paste completely set.

We recommend that you use our pointed leaves to go with this orchid in spray assemblies.